

General Electric Company

Schenectady, N.Y.

SUPPLY DEPARTMENT

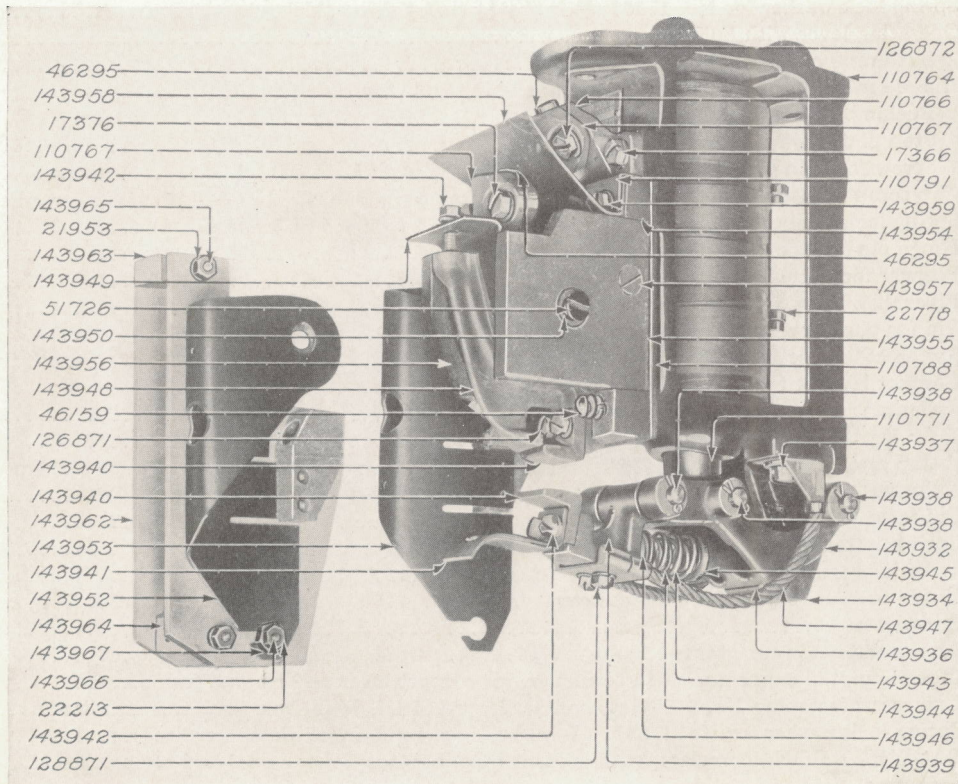
July, 1913

Bulletin No. A4154

PARTS OF TYPE DB-260, FORMS A, B, C, D, E AND F CONTACTORS USED PRINCIPALLY WITH SPRAGUE-GENERAL ELECTRIC TYPE M CONTROL APPARATUS

NOTE.—These contactors are for cable connection and are adapted for the Type DI-250, Forms A, B, C and D vertical interlocks.

TYPE DB-260, FORM A CONTACTOR



Cat. No.	Description
110759	OPERATING MAGNET SPOOL, wound complete, DB-260-A1.....
110760	Operating magnet spool, wound complete, DB-260-A2.....
110761	Operating magnet spool, wound complete, DB-260-A3.....
110762	Operating magnet spool, wound complete, DB-260-A4.....
110763	Operating magnet spool, wound complete, DB-260-A5.....
143927	Operating magnet spool, wound complete, DB-260-A6.....
143928	Operating magnet spool, wound complete, DB-260-A7.....

NOTE.—The data in this publication are for the convenience of customers, and every effort is made to avoid error, but this Company does not guarantee their correctness, nor does it hold itself responsible for any errors or omissions in this publication. Subject to change without notice.

GENERAL ELECTRIC COMPANY

A4154-2 Parts of Type DB-260 Contactors

Cat. No.	Description
143929	Operating magnet spool, wound complete, DB-260-A8.....
143930	Operating magnet spool, wound complete, DB-260-A9.....
22778	Copper terminal for magnet spool.....
105331	Screw fastening terminal to magnet spool (14-24, $\frac{3}{8}$ in. r. h. sherardized).....
141282	Spring lock washer for No. 105331 ($\frac{9}{32}$ in. by $\frac{1}{32}$ in. by $\frac{3}{64}$ in. thick, sherardized).....
110764	MAGNET FRAME with bushing for plunger.....
143931	Bushing for magnet frame.....
110765	Magnet pole.....
110766	Terminal, complete, for frame.....
110767	* Clamp for terminal.....
46295	Bushing for terminal.....
126872	Clamping screw for terminal ($\frac{5}{16}$ in.-18, $\frac{5}{8}$ in. hex. h. slot. sherardized cap screw).....
141218	Spring lock washer for No. 126872 ($\frac{11}{32}$ in. by $\frac{19}{32}$ in. by $\frac{3}{64}$ in. thick, sherardized).....
17366	Cap screw fastening terminal to magnet frame ($\frac{5}{16}$ in.-18, $\frac{7}{8}$ in. hex. h. slot. sherardized).....
141218	Spring lock washer for No. 17366 ($\frac{11}{32}$ in. by $\frac{19}{32}$ in. by $\frac{3}{64}$ in. thick, sherardized).....
143932	Operating lever with bushings.....
143933	Bushing for operating lever.....
143934	Hinge bracket for operating lever, with bushing and stop plate.....
143935	Bushing for hinge bracket.....
143936	Stop plate for hinge bracket.....
21752	Screw fastening stop plate to bracket (10-32, $\frac{3}{8}$ in. f. h. brass).....
143937	Cap screw fastening hinge bracket to magnet frame ($\frac{3}{8}$ in.-16, $\frac{7}{8}$ in. hex. h. slot. sherardized).....
141258	Spring lock washer for No. 143937 ($\frac{3}{32}$ in. by $\frac{25}{32}$ in. by 0.0625 in. sherardized).....
143938	Hinge pin for operating lever ($\frac{1}{16}$ in. by $3\frac{1}{2}$ in.).....
110771	Plunger for operating lever.....
143840	Fiber disk between plunger and magnet pole.....
143938	Pin for plunger and operating lever ($\frac{1}{16}$ in. by $3\frac{1}{2}$ in.).....
4030	Spring cotter for No. 143938 ($\frac{3}{32}$ in. by $\frac{5}{8}$ in.).....
143939	Contact lever with contact and arcing tips.....
143940	Contact tip.....
143941	Arcing tip with stiffening plate.....
143942	Cap screw fastening Nos. 143940, 143941 to contact lever (14-24, 1 in. hex. h. slot. sherardized).....
141282	Spring lock washer for No. 143942 ($\frac{9}{32}$ in. by $\frac{1}{32}$ in. by $\frac{3}{64}$ in. thick, sherardized).....
143938	Pin for contact and operating levers ($\frac{1}{16}$ in. by $3\frac{1}{2}$ in.).....
4030	Spring cotter for No. 143938 ($\frac{3}{32}$ in. by $\frac{5}{8}$ in.).....
143943	Outside pressure spring for contact lever.....
143944	Inside pressure spring for contact lever.....
143945	Spring seat.....
143946	Insulated button for pressure springs.....
143947	Flexible pigtail connectors with terminals, for contact lever and magnet frame.....
128871	Cap screw fastening No. 143947 to contact lever (14-24, $\frac{1}{2}$ in. hex. h. slot. sherardized).....
141282	Spring lock washer for No. 128871 ($\frac{9}{32}$ in. by $\frac{1}{32}$ in. by $\frac{3}{64}$ in. thick, sherardized).....
143948	BLOWOUT COIL, complete, with contact base, contact tip, terminal and arcing shield.....
143940	Contact tip.....
126871	Cap screw fastening contact tip to base (14-24, $\frac{3}{4}$ in. hex. h. slot. sherardized).....
141282	Spring lock washer for No. 126871 ($\frac{9}{32}$ in. by $\frac{1}{32}$ in. by $\frac{3}{64}$ in. thick, sherardized).....
110767	* Clamp for terminal.....
46295	Bushing for terminal.....
17376	Clamping screw for terminal ($\frac{5}{16}$ in.-18, $\frac{3}{4}$ in. hex. h. slot. sherardized cap screw).....
141218	Spring lock washer for No. 17376 ($\frac{11}{32}$ in. by $\frac{19}{32}$ in. by $\frac{3}{64}$ in. thick, sherardized).....
143949	Arcing shield with stiffening plate, for blowout coil.....
143950	Blowout coil core.....
143951	Fiber sleeve for blowout coil core ($\frac{3}{4}$ in. by $\frac{1}{16}$ in. by $3\frac{1}{4}$ in. long).....
143952	POLE PIECE, right-hand, with supporting block.....
143953	Pole piece, left-hand, with supporting block.....

* See page 3 for special terminal clamps.

Cat. No.	Description
51726	Screw fastening pole pieces to blowout coil core ($\frac{5}{16}$ in.-18, $\frac{5}{8}$ in. f. h.)
143954	Insulation base for blowout coil
143955	Insulation side plate, right-hand, for blowout coil
143956	Insulation side plate, left-hand, for blowout coil
143957	Screw fastening side plates to base ($\frac{5}{16}$ in.-18, $\frac{3}{4}$ in. f. h. brass)
10576	Long screw fastening insulation base to blowout coil ($\frac{5}{16}$ in.-18, 1 in. f. h.)
56788	Short screw fastening insulation base to blowout coil ($\frac{5}{16}$ in.-18, $\frac{3}{4}$ in. f. h.)
110788	Insulation plate between insulation base and magnet frame
143958	Fiber shield between blowout coil and magnet frame terminals
46159	Screw fastening pole piece supporting blocks and insulation base to magnet frame (14-24, 2 $\frac{1}{4}$ in. r. h. brass)
143959	Cap screw fastening fiber shield and insulation base to magnet frame (14-24, 1 $\frac{1}{2}$ in. hex. h. slot. sherardized)
143960	Washer for No. 46159 ($\frac{17}{64}$ in. by $\frac{1}{2}$ in. by 0.034 in. sherardized)
141282	Spring lock washer for Nos. 46159, 143959 ($\frac{3}{32}$ in. by $\frac{17}{32}$ in. by $\frac{3}{64}$ in. thick, sherardized)
110791	Washer plate for No. 143959
143961	ARC CHUTE, complete, consists of side plates with upper and lower spacing blocks
143962	Side plate for arc chute
143963	Spacing block for side plates, upper end
143964	Spacing block for side plates, lower end
143965	Stud for side plates and spacing blocks (14-24, 2 $\frac{9}{16}$ in. long, brass)
21953	Nut for No. 143965 (14-24, $\frac{3}{8}$ in. thick, $\frac{1}{2}$ in. across flats hex. cham. both sides brass)
143960	Washer for No. 143965 ($\frac{17}{64}$ in. by $\frac{1}{2}$ in. by 0.034 in. sherardized)
141282	Spring lock washer for No. 21953 ($\frac{3}{32}$ in. by $\frac{17}{32}$ in. by $\frac{3}{64}$ in. thick, sherardized)
143966	Stud for pole pieces, side plates and lower spacing block (14-24, 2 $\frac{13}{16}$ in. long, brass)
143967	Large nut for No. 143966 (14-24, $\frac{5}{16}$ in. thick, $\frac{5}{8}$ in. across flats, hex. brass sp'l)
22213	Small nut for No. 143966 (14-24, hex flat brass)
143942	Cap screw fastening blowout coil arcing shield and upper spacing block for arc chute to blowout coil (14-24, 1 in. hex. h. slot. sherardized)
143960	Washer for No. 143942 ($\frac{17}{64}$ in. by $\frac{1}{2}$ in. by 0.034 in. sherardized)
141282	Spring lock washer for No. 143942 ($\frac{3}{32}$ in. by $\frac{17}{32}$ in. by $\frac{3}{64}$ in. thick, sherardized)

**INSULATIONS FOR OPERATING MAGNET SPOOL TERMINALS AND CABLE CLEAT,
FOR TYPE DB-260 CONTACTORS WHEN USED ON 1200 OR 1500 VOLTS**

143968	Insulation strip, right-hand, between operating magnet spool terminals and magnet frame
143969	Insulation strip, left-hand, between operating magnet spool terminals and magnet frame
143970	Insulation plate, top, between cable cleat and Nos. 143968, 143969
143971	Insulation plate, bottom
143972	Cleat for cables
143973	Screw fastening Nos. 143968, 143969, 143970, 143972 to magnet frame (14-24, 1 $\frac{1}{2}$ in. r. h. sherardized)
121815	Screw fastening Nos. 143968, 143969, 143971 to magnet frame (14-24, $\frac{1}{2}$ in. r. h. sherardized)
143974	Washer for No. 121815 ($\frac{17}{64}$ in. by $\frac{1}{2}$ in. by 0.0625 in. sherardized)
141282	Spring lock washer for Nos. 143973, 121815 ($\frac{3}{32}$ in. by $\frac{17}{32}$ in. by $\frac{3}{64}$ in. thick, sherardized)

SPECIAL TERMINAL CLAMPS FOR MAGNET FRAME AND BLOWOUT COIL TERMINALS

143975	Terminal clamp with offset shank having $\frac{1}{32}$ in. cable hole, for blowout coil terminal
143977	Terminal clamp with $\frac{1}{32}$ in. cable hole parallel to groove, for frame or blowout coil terminals
143978	Terminal adapter with $\frac{5}{8}$ in. cable hole, for blowout coil terminal



GENERAL ELECTRIC COMPANY

A4154-4 Parts of Type DB-260 Contactors

OPERATING LEVER FOR USE WITH TYPE DI-250, FORMS A, B, C AND D VERTICAL INTERLOCKS WHEN USED WITH TYPE DB-260, FORMS A, B, C, D, E AND F CONTACTORS

Cat. No.	Description
111153	Operating lever for interlock.....
111155	Pin for No. 111153 and contactor bracket ($\frac{5}{16}$ in. by $1\frac{3}{8}$ in. tobin bronze).....
10110	Spring cotter for No. 111155 ($\frac{5}{64}$ in. by $\frac{1}{2}$ in.).....

TYPE DB-260, FORM B CONTACTOR

Following are the parts of the Type DB-260, Form B contactor which differ from those of the Type DB-260, Form A:

143979	Hinge bracket for operating lever, with bushing and stop plate.....
143980	Stop plate for hinge bracket.....
143981	Pressure spring for contact lever.....
110778	Fiber button for spring.....

TYPE DB-260, FORM C CONTACTOR

Following are the parts of the Type DB-260, Form C contactor which differ from those of the Type DB-260, Form A:

143982	ARC CHUTE, complete, consists of side plates with upper and lower spacing blocks.....
143983	Spacing block for side plates, lower end.....

TYPE DB-260, FORM D CONTACTOR

Following are the parts of the Type DB-260, Form D contactor which differ from those of the Type DB-260, Form A:

143984	BLOWOUT COIL, complete, with contact base, contact tip, terminal and arcing plate.....
143985	Arcing plate for blowout coil.....
143986	Guard for arcing plate.....
121815	Screw fastening arcing plate and guard to blowout coil (14-24, $\frac{1}{2}$ in. r. h. sherardized).....
141282	Spring lock washer for No. 121815 ($\frac{3}{32}$ in. by $\frac{17}{32}$ in. by $\frac{3}{64}$ in. thick, sherardized).....
143987	Insulation side plate, right-hand, for blowout coil.....
143988	Insulation side plate, left-hand, for blowout coil.....

TYPE DB-260, FORM E CONTACTOR

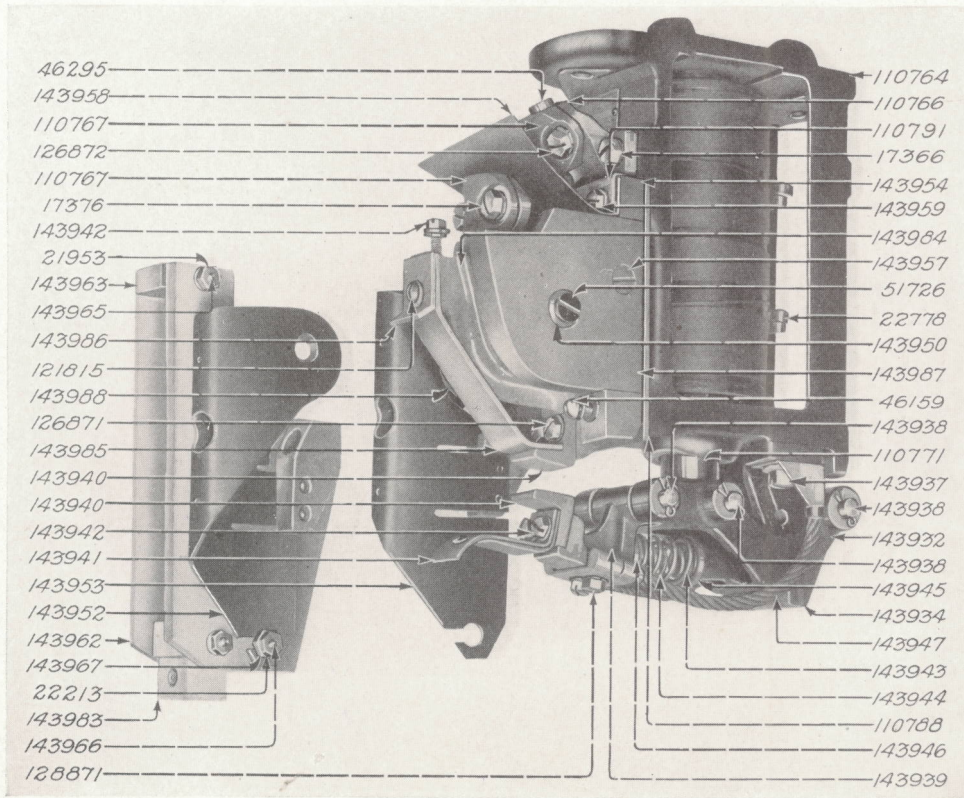
Following are the parts of the Type DB-260, Form E contactor which differ from those of the Type DB-260, Form A:

143979	Hinge bracket for operating lever, with bushing and stop plate.....
143980	Stop plate for hinge bracket.....
143981	Pressure spring for contact lever.....
110778	Fiber button for spring.....
143984	BLOWOUT COIL, complete, with contact base, contact tip, terminal and arcing plate.....
143985	Arcing plate for blowout coil.....
143986	Guard for arcing plate.....
121815	Screw fastening arcing plate and guard to blowout coil (14-24, $\frac{1}{2}$ in. r. h. sherardized).....
141282	Spring lock washer for No. 121815 ($\frac{3}{32}$ in. by $\frac{17}{32}$ in. by $\frac{3}{64}$ in. thick, sherardized).....
143987	Insulation side plate, right-hand, for blowout coil.....
143988	Insulation side plate, left-hand, for blowout coil.....

TYPE DB-260, FORM F CONTACTOR

Following are the parts of the Type DB-260, Form F contactor which differ from those of the Type DB-260, Form A:

Cat. No.	Description
143984	BLOWOUT COIL, complete, with contact base, contact tip, terminal and arcing plate.....
143985	Arcing plate for blowout coil.....



143986	Guard for arcing plate.....
121815	Screw fastening arcing plate and guard to blowout coil (14-24, 1/2 in. r.h. sherardized).....
141282	Spring lock washer for No. 121815 (9/32 in. by 17/32 in. by 3/4 in. thick, sherardized).....
143987	Insulation side plate, right-hand, for blowout coil.....
143988	Insulation side plate, left-hand, for blowout coil.....
143982	ARC CHUTE, complete, consists of side plates with upper and lower spacing blocks.....
143983	Spacing block for side plates, lower end.....

GENERAL ELECTRIC COMPANY

A4154-6 Parts of Type DB-260 Contactors

INDEX TO CATALOGUE NUMBERS

CAT. NO. PAGE	CAT. NO. PAGE	CAT. NO. PAGE	CAT. NO. PAGE	CAT. NO. PAGE	CAT. NO. PAGE	CAT. NO. PAGE
4030-2	110759-1	111155-4	143932-2	143946-2	143960-3	143974-3
10110-4	110760-1	121815-3, 4, 5	143933-2	143947-2	143961-3	143975-3
10576-3	110761-1	126871-2	143934-2	143948-2	143962-3	143977-3
17366-2	110762-1	126872-2	143935-2	143949-2	143963-3	143978-3
17376-2	110763-1	128871-2	143936-2	143950-2	143964-3	143979-4
21752-2	110764-2	141218-2	143937-2	143951-2	143965-3	143980-4
21953-3	110765-2	141258-2	143938-2	143952-2	143966-3	143981-4
22213-3	110766-2	141282-2,3,4,5	143939-2	143953-2	143967-3	143982-4, 5
22778-2	110767-2	143840-2	143940-2	143954-3	143968-3	143983-4, 5
46159-3	110771-2	143927-1	143941-2	143955-3	143969-3	143984-4, 5
46295-2	110778-4	143928-1	143942-2, 3	143956-3	143970-3	143985-4, 5
51726-3	110788-3	143929-2	143943-2	143957-3	143971-3	143986-4, 5
56788-3	110791-3	143930-2	143944-2	143958-3	143972-3	143987-4, 5
105331-2	111153-4	143931-2	143945-2	143959-3	143973-3	143988-4, 5

GENERAL ELECTRIC COMPANY

PRINCIPAL OFFICES, SCHENECTADY, N. Y.

SALES OFFICES
(Address nearest office)

ATLANTA, GA.	Third National Bank Building
Birmingham, Ala.	Brown-Marx Building
Jacksonville, Fla.	Heard National Bank Building
New Orleans, La.	Maison-Blanche Building
BOSTON, MASS.	84 State Street
Providence, R. I.	Union Trust Building
Springfield, Mass.	Massachusetts Mutual Building
CHICAGO, ILL.	Monadnock Building
Butte, Mont.	Electric Building
Davenport, Iowa	Security Building
Detroit, Mich.	Dime Savings Bank Bldg. (Office of Soliciting Agent)
Keokuk, Iowa	Monarch Building
Madison, Wis.	Ft. Wayne Works
Milwaukee, Wis.	Public Service Building
Minneapolis, Minn.	410 Third Ave., North
CINCINNATI, OHIO	Provident Bank Building
Chattanooga, Tenn.	James Building
Cleveland, Ohio	Citizens Building
Columbus, Ohio	Columbus Savings & Trust Building
Dayton, Ohio	Schwind Building
Indianapolis, Ind.	Traction Terminal Building
Knoxville, Tenn.	Bank & Trust Building
Louisville, Ky.	Starks Building
Memphis, Tenn.	Randolph Building
Nashville, Tenn.	Stahlman Building
Toledo, Ohio	Spitzer Building
DENVER, COLO.	First National Bank Building
Boise, Idaho	Idaho Building
Salt Lake City, Utah	Newhouse Building
NEW YORK, N. Y.	30 Church Street
Buffalo, N. Y.	Electric Building
Elmira, N. Y.	Hulett Building
Erie, Pa.	Marine National Bank Building
Hartford, Conn.	Hartford National Bank Building
New Haven, Conn.	Second National Bank Building
Rochester, N. Y.	Granite Building
Syracuse, N. Y.	Onondaga County Savings Bank Building
PHILADELPHIA, PA.	Witherspoon Building
Baltimore, Md.	Electrical Building
Charleston, W. Va.	Charleston National Bank Building
Charlotte, N. C.	Commercial National Bank Building
Pittsburg, Pa.	Oliver Building
Richmond, Va.	Mutual Building
Washington, D. C.	Evans Building
Youngstown, Ohio	Wick Building
SAN FRANCISCO, CAL.	Rialto Building
Los Angeles, Cal.	124 West Fourth Street
Portland, Ore.	Electric Building
Seattle, Wash.	Colman Building
Spokane, Wash.	Paulsen Building
ST. LOUIS, MO.	Wainwright Building
Joplin, Mo.	Miners' Bank Building
Kansas City, Mo.	Dwight Building
Omaha, Neb.	Union Pacific Building

For TEXAS, OKLAHOMA and ARIZONA Business refer to
Southwest General Electric Co., (Formerly Hobson Electric Co.)

DALLAS, TEX.	1701 N. Market Street
El Paso, Tex.	500-2 San Francisco Street
Houston, Tex.	1114 Franklin Street
Oklahoma City, Okla.	Insurance Building

FOREIGN SALES	}	Schenectady, N. Y., Foreign Dept.
OFFICES		New York, N. Y., 30 Church Street
		London, E. C., England, 83 Cannon Street

For all CANADIAN Business refer to
Canadian General Electric Co., Ltd., Toronto, Ont.